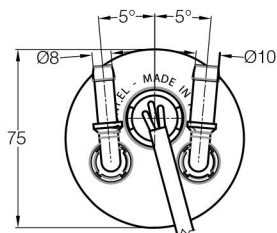
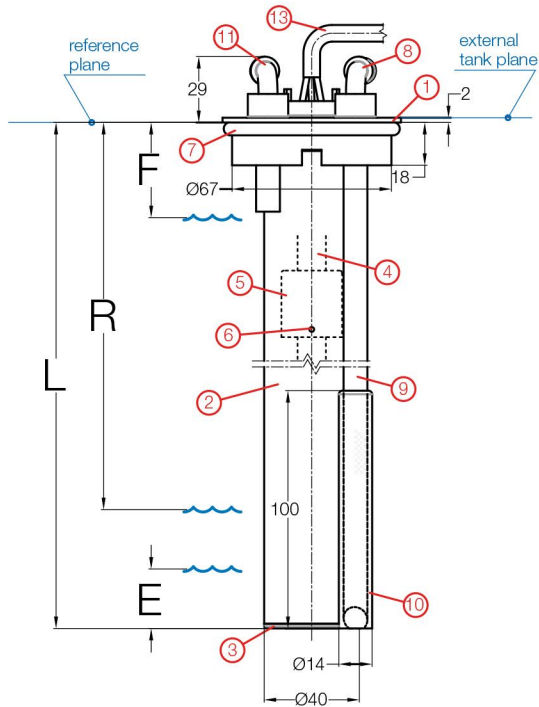
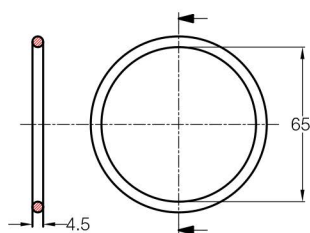


C2

Sensore con fissaggio a piastra metallica
con tubi carburante
Metal plate fixation sensor with fuel lines



GUARNIZIONE ESTERNA
EXTERNAL GASKET



COMPATIBILE
CON CARBURANTI

FUEL
COMPATIBILITY

Benzina senza piombo

Unleaded petrol

Gasolio

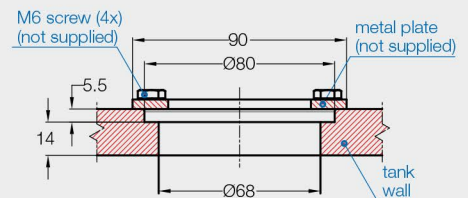
Diesel fuel

Gasolio agricolo

Bio-diesel



FISSAGGIO AL SERBATOIO
TANK COUPLING



PIASTRA METALLICA
(dimensioni consigliate)
METAL PLATE
(recommended dimensions)

